

CONGRATULATIONS!



Making the trip to North Platte were (back row, left) Tara Erxleben, Jennifer Hammer, Tonya Erxleben, Suzy Lutt, Kathy Mohlfeld, Shelley Gilliland, Kristy Hansen; (front) Traci Gamble, Marnie Bruggeman, Leslie Keating, Amy Schlus, Dana Nelson and Robin Lutt.

WAYNE 18 & UNDER GIRLS SOFTBALL TEAM

On A Fine 23-10 Season And A 9th Place Finish
At The State Class B Tournament

We're Proud Of Your Accomplishments!

Wayne Greenhouse
Amber Inn
Arnie's Ford-Mercury
Black Knight
Century 21 State-National
Charlie's Refrig. &
Appl. Service
Diamond Center
Discount Furniture
Doescher Appliance
El Toro Package Store & Liquor
Ellingson Motors
First National Agency
First National Bank
Fredrickson Oil Co.
Godfather's Pizza
Griess Rexall
Jensen-Peters Agency, Inc.
Koplin Auto Supply
Melodee Lanes
Morris Machine Shop
Northeast Nebr.
Insurance Agy.
Pamida Discount Center
Pat's Beauty Salon
McBride-Wiltse Mortuary
Wayne - Winslow - Laurel
Sav-Mor Pharmacy
Schumacher Funeral Home
Wayne - Carroll - Winslow
State National Bank
Surbers
Wall to Wall Decorating/
Pack 'n Ship

Wayne Auto Parts
Wayne Care Centre
Wayne Co. Public Power Dist.
Wayne Herald
Benthack Clinic
Bill's G.W.
Carhart Lumber Company
Clarkson Service
Daylight Donuts
Taco del Sol/Connie's Way
Fletcher Farm Service, Inc.
The 4th Jug
Gerhold Concrete
Hardee's of Wayne
Hazel's Beauty Shop
Keith Jech Agency
Country Nursery
Kaup's TV Sales & Service
Stoltenberg Partners
Magnuson Eye Care
Hillier Chiropractic Clinic
Mr. Mitchell's Styling Salon
Greenview Farms/Dick
Sorensen
Northwestern Mutual Life
Insurance
Nutrena Feeds
The Office Connection
Restful Knights
Terra International Inc.

Tom's Body Shop
Timpte, Inc.
Wayne Grain & Feed Co.
Wayne Shoe Company
Wayne Super Foods
Wayne Family Practice Group
Dave's Body Shop
Farmers Feed & Seed
Spethman Plumbing
Johnson's Frozen Foods
Shear Designs
Dr. Wessel D.D.S.
Mert's Place
Farmers Ins. Group/
Roy Korth Agy.
Randy's Floor Covering Service
Mrsny Sanitary Service
Garst Seed Co.
Max Kathol CPA
Starks Electric & Small Engine
Rain Tree Drive-Inn Liquor
Smart Set III
State National Ins. Co.
Logan Valley Implement
Mr. K's Mini Service
Wayne Derby Service
Peoples Natural Gas
Wayne's True Value Hardware
Wayne Sporting Goods
Geno's Steakhouse
PoPo's II

Prices effective Wednesday, July 29 thru Tuesday, August 4

Reel in the Savings!

Star-Kist Water or Oil Packed
TUNA
6 1/2-Oz. Cans
49¢



Nature Harvest Variety
BREADS
20-Oz. Loaf
79¢

Barrel of Fun
NACHO CHEESE DIP
Regular and Deluxe
9-Oz. Can
\$1.09

Barrel of Fun
DELI TOSTADOS
Plain and Nacho
16-Oz. Pkg.
\$1.09

Shurfine
MANDARIN ORANGES
11-Oz. Can
51¢



Wesson
COOKING OIL
38-Oz. Bottle
\$1.69



Bolt
PAPER TOWELS
Jumbo Roll
69¢

Big Mouth
SCHMIDT
6-Pack
12-Oz. Bottles
\$1.89



BILL'S GW DRY CLEANING DEPARTMENT
Monday thru Friday
Same Day Service If Needed

REGISTER THRU THURSDAY
DRAWING THURSDAY
EVENING FOR

FREE \$50 WORTH OF GROCERIES

CHECK OUT
BILL'S GW BOOK NOOK
Located in the Ice Cream Parlor

10% OFF
All Greeting Cards & Books

VIDEO RENTALS
Located in the Ice Cream Parlor

Old Home
HAMBURGER & HOT DOG BUNS
12 Hamburger Buns
10 Hot Dog Buns
69¢

Shurfine Buttermilk
White or Wheat
BREAD
1 1/2-Lb. Loaf
73¢



Eggo
WAFFLES
Homestyle & Buttermilk
11-Oz. Pkg.
89¢

Van Camp's
PORK & BEANS
16-Oz. Cans
3/99¢



French's
SPECIALTY POTATOES
All Varieties
5 1/2-Oz. Box
69¢

Shurfine
POP
All Varieties
12-Oz. Cans
6/99¢



Betty Crocker Family
FUDGE BROWNIE MIX
2 1/2-Oz. Box
87¢



Post Toasties
CORN FLAKES
18-Oz. Box
\$1.09



Blue Bunny
YOGURT
9 Flavors
8-Oz. Ctns.
3/99¢

Gillette
MILK
1% Gallon
\$1.69



Gillette
MALT CUPS
Chocolate, Vanilla, Strawberry
3/99¢



Gillette Round
Old Fashioned
ICE CREAM
1/2-Gallon
All Flavors
\$1.79



Shurfine Frozen
WHIPPED TOPPING
8-Oz. Tub
49¢

Shurfine
HALF & HALF
Pint
49¢



PRODUCE




California All Varieties
PLUMS
Lb.
29¢

Honeydew
MELONS
Ea.
99¢



GREEN PEPPERS
Lb.
49¢


AVOCADOS
3/51¢



Sunkist
LEMONS
4/88¢



FRESH MEAT



100% Pure 75% Lean
GROUND BEEF
89¢ Lb.
No Retailers Please

GROUND CHUCK Lb. **\$1.49**

Maple River **BACON** Lb. Pkg. **\$1.69**

Shurfine **LUNCHEON MEATS** 12-Oz. Pkg. **\$1.19**

Whole Grade A **CHICKENS** Lb. **49¢**

Family Pack **FRYERS** Lb. **47¢**

Family Pack Chicken **LEGS & THIGHS** Lb. **69¢**

Farmland - Thick or Thin Sliced **BACON** Lb. Pkg. **\$1.89**

Iowa Gold All Meat **FRANKS** 12-Oz. Pkg. **69¢**

Wimmer's Skinless **WIENERS** 2 1/2-Lb. Bag **\$4.69**

Gorton's Crunchy **FISH STICKS** 20-Oz. Pkg. **\$2.99**

Hormel **LITTLE SIZZLERS** 12-Oz. Pkg. **99¢**

Wimmer's **SLIM GEMS** 11-Oz. Stick **\$1.99**

Always Fresh **RING BOLOGNA** Lb. Ring **\$1.39**

Hillshire Farms **BRATWURST** Lb. **\$1.99**

Center Cut **PORK CHOPS** Lb. **\$2.19**

Country Style **RIBS** Lb. **\$1.49**

Pork Loin **END ROAST** Lb. **\$1.29**

Wimmer's **LITTLE SMOKIES** Lb. Pkg. **\$2.39**

Wimmer's **HONEY LOAF** 6-Oz. Pkg. **\$1.29**

Tyson Chicken Breast **PATTIES** 12-Oz. Pkg. **\$2.49**

Frontier **BACON** Lb. Pkg. **99¢**

Member of **BILL'S GW AFFILIATED** FOOD STORE Cooperative, Inc.
Owned & operated independently by Lueders, Inc.

STORE HOURS:
8 a.m.-9 p.m. Monday thru Saturday
8 a.m.-6 p.m. Sunday
NOT RESPONSIBLE FOR MISPRINTS





This and That

Quad County Extension Agent
Don C. Spitzer

ONION MATURITY

You can determine the maturity of onions in your garden by checking the neck of the plant to see if it is dry and the top has kinked over. Other indicators are roots drying up on the stem plate at the base of the bulb, outer scales of the onion drying and loosening, and darkening of the outer scales on yellow onions. Usually when 50 percent of the onions in your garden are kinked, most varieties are ready for harvest. Onions should be cured before storage. The onion should be placed in a warm (60-80 degree) dry place (humidity below 80 percent). The neck should be dry and the outer two or three scales dry and firm when the curing process is completed. Warm dry days will hasten the curing process. Do not place the onion bulbs in full sun during the curing process.

VEGETABLE SPAGHETTI

Vegetable spaghetti is a novelty item which has grown in popularity over the past few years. The fruits are ripe when they change to a yellow color and are 8 to 10 inches long. The shell should still be soft enough to be dented by your thumbnail at harvest time. The whole fruit should be baked or boiled for 20 to 30 minutes. Sort the seed once the fruit is cut in half. Rake out the flesh in long spiral spaghetti-like strands. Season with salt, pepper, and butter or mix with spaghetti sauce.

ROSES

Always be sure that roses have a sufficient amount of water. A good, thorough soaking at least once a week if there is no rain should provide the moisture needed. Try to keep the water off the leaves to lessen the danger of leaf disease. Watering in the morning is recommended.

The next thing to do is to give the roses a feeding of 10-15-5 fertilizer. This is spread around the base of the bushes and worked into the soil very lightly. Be sure to spread it evenly and not leave the fertilizer in clumps.

In order to produce more blooming wood on hybrid teas, cut the plant back by about one-third in July. Cut branches back to a lateral bud. This July pruning will leave the plant without blooms in August but the September and October blooms will more than make up for it.

Don't forget to apply that preventive spray program to control blackspot and mildew. Benomyl will control both; however there are other good fungicides available.

CRP signup nears deadline

Farmers who want to enter highly erodible cropland into the U.S. Department of Agriculture's 10-year Conservation Reserve Program (CRP) may do so during the program's fifth signup period July 20-31, said U.S. Deputy Secretary of Agriculture Peter C. Myers. Myers also said that no bonus annual rental payments will be made on CRP land offered during this signup period.

During the signup period, producers will be given the option to enter into a CRP contract beginning with either the 1987 or 1988 crop year. "CRP cropland offered for 1988 contracts during the fifth signup may not be grazed after Oct. 1," said Myers. "Gleaning of 1987 grain or crop residue is considered part of the harvesting operation and is permissible."

The CRP is one of the conservation initiatives contained in the Food Security Act of 1985 designed to reduce soil erosion. Under the CRP, owners and operators of highly erodible cropland agree to cease production on the land for a 10-year period and to devote it to conservation uses.

Land is considered highly erodible if it meets either of two standards. Under the first standard, the land must have an erodibility index equal to or greater than the number eight for eight for either win or water erosion.

For more information, contact the Wayne County ASCS office.



Photography: Dianne Jaeger

THE THEOPHILUS CHURCH near Winside has received world-wide recognition since it was moved last month into Winside where it will be used as a branch museum of the Wayne County Historical Society. Pictured with a display of articles from the church move from newspapers around the world are Ruby Ritze, at left, secretary of the Winside museum committee, and Veryl Jackson, fund raising chairman. Copies have been received of clippings from at least 10 newspapers in the United States as well as newspapers in Ota City Gumma Japan and Disson, West Germany. The committee has received or been told about articles appearing in the New York Times, Tallahassee (Fla.) Democrat, Lincoln Journal, Vero Beach (Fla.) Press Journal, Omaha World Herald, Des Moines Register and Philadelphia Inquirer, as well as newspapers in Cedar Rapids, Iowa, Eau Claire, Wis., Greeley, Colo., and various local publications including The Wayne Herald. "It's interesting this move has received so much attention," said Bill Burris, project chairman. "Buildings are moved every day."

Church Services

EVANGELICAL FREE CHURCH
1 mile east of Country Club (Larry Ostercamp, pastor)
Sunday: Sunday school, 9:45 a.m.; worship, 11; prayer meeting and evening service, 7 p.m.
Wednesday: Prayer and Bible study, 7:30 p.m.

FIRST BAPTIST CHURCH
(Gordon Granberg, pastor)
Sunday: Sunday school, 9:30 a.m.; coffee and fellowship, 10:30 to 10:45; worship, 10:45.
Wednesday: Midweek service, 7:30 p.m.

FIRST CHURCH OF CHRIST (Christian)
1110 East 7th (Kenny Cleveland, pastor)
Sunday: Sunday school, 9:30 a.m.; worship, 10:30.

FIRST TRINITY LUTHERAN CHURCH
Altona Missouri Synod (Ricky Bertels, pastor)
Sunday: Worship with communion, 9 a.m.; no Sunday school during August.
Wednesday: Set up booth at Wayne County Fairgrounds in the evening.

FIRST UNITED METHODIST CHURCH
(Keith W. Johnson, pastor)
Sunday: Worship, 9:30 a.m.
Tuesday: Council on Ministries, 7:30 p.m.

GRACE LUTHERAN CHURCH
Missouri Synod (Jonathan Vogel, pastor) (James Pennington, associate pastor)
Thursday: Grace witness class, 7 p.m.
Saturday: Bible breakfast, 6:30 a.m.
Sunday: The Lutheran Hour, broadcast KTCH, 7:30 a.m.; Sunday

school and Bible classes, 9; worship, 10; LYF, 1:30 p.m.
Monday: Board of elders, 8 p.m.
Wednesday: Men's Bible breakfast, 6:30 a.m.

IMMANUEL LUTHERAN CHURCH
Missouri Synod (Steven Kramer, pastor)
Sunday: Sunday school, 9:30 a.m.; worship, 10:30.

INDEPENDENT FAITH BAPTIST CHURCH
208 E. Fourth St. (Bernard Maxson, pastor)
Sunday: Sunday school, 10 a.m.; worship, 11; evening worship, 7:30 p.m.
Wednesday: Bible study, 7:30 p.m. For free bus transportation call 375-3413 or 375-2358.

JEHOVAH'S WITNESSES
Kingdom Hall 616 Grainland Rd.
Friday: Congregational book study, 7:30 p.m.
Sunday: Bible educational talk, 9:30 a.m.; Watchtower study, 10:20.
Tuesday: Theocratic school, 7:30 p.m.; service meeting, 8:20.
For more information call 375-2396.

REDEEMER LUTHERAN CHURCH
(Wallace Wolff, interim pastor)
Sunday: Early service with communion, 8:30 a.m.; late service with communion, 11. No Sunday school during August.
Monday: Ladies Bible study meeting at Irene Reibolds, 1:30 p.m.; adult family life, 8.
Tuesday: Ladies study, 6:45 a.m.

ST. ANSELM'S EPISCOPAL CHURCH
1006 Main St. (James M. Barnett, pastor)
Sunday: Services, 9 a.m., except second Sunday of each month at 7:30 a.m.

ST. MARY'S CATHOLIC CHURCH
(Donald Cleary, pastor)
Saturday: Mass, 6 p.m.
Sunday: Mass, 8 and 10 a.m.

ST. PAUL'S LUTHERAN CHURCH
(Ted Youngerman, pastor)
Sunday: Worship with communion, 9 a.m.
Monday: Sunday school teachers meeting, 7:30 p.m.
Tuesday: Tops, 6:30 p.m.; worship and music committee, 7:30; stewardship committee, 8.
Wednesday: Esther and Naomi Circle leaders Bible study, 1 p.m.

WAYNE PRESBYTERIAN CHURCH
(Dr. John G. Mitchell, pastor)
Sunday: Worship with communion, 9:45 a.m.; coffee and fellowship, 10:35.

WAKEFIELD CHRISTIAN CHURCH
(David Rusk, pastor)
Thursday: Vacation Bible school, 6:30 to 8:30 p.m.
Sunday: Vacation Bible school program, 9:30 a.m.; worship, 10:30.
Tuesday: Ladies Bible study at the church, 9:30 a.m.
Wednesday: Wakefield area Bible study, 8 p.m.

Winside News

Dianne Jaeger 286-4504

PHYSICALS
The Pierce Clinic will be at Winside School Tuesday, Aug. 4 from 1-4 p.m. to give physicals. All students who are entering Kindergarten, the 7th grade, and all students new out of state in grades 7-12 who plan on participating in the athletic program must have a physical. Cost is \$8 payable that day. Kindergarten students who need inoculations or boosters should call the Pierce Clinic in advance to make arrangements.

CHANGE IN HOURS
Due to the excessive heat the Winside Public Library hours will be changed starting tomorrow to 8:30 a.m.-12:30 p.m. on Fridays and Mondays. It will remain open on Monday evenings from 7-9 p.m. These hours will be in effect until further notice.

St. Paul's Lutheran Church
Thursday, July 30: Adult Bible Study 6:30 a.m. Pastors office hours 9-11:30 a.m.
Friday, July 31: Pastor's office hours 9-11:30 a.m.
Sunday, August 2: Sunday school and Bible Classes 9:10 a.m.; Worship

10:30 a.m.; acolytes: Patty Oberle and Craig Brugger; Church Council 7:30 p.m.
Monday, August 3: Women's Bible Study 9:30 a.m.
Tuesday, August 4: Pastor's office hours 9-11:30 a.m.
Wednesday, August 5: Ladies Aid, 1:30 p.m.; Lutheran Womens Missionary League following, youth 7:30 p.m.

Trinity Lutheran Church (Rev. Peter Jark Swain)
Sunday, August 2: Worship with Holy Communion, 9 a.m.

United Methodist (Rev. Marvin Coffey)
Sunday, August 2: Worship with Holy Communion, 11:05 a.m.
Tuesday, August 4: Church Council, 7:30 p.m.

SOCIAL CALENDAR
Thursday, July 30: Boy's Baseball 1:30 - 3:30 p.m.
Friday, July 31: Public Library 1-5 p.m.; G.T. Pinochle, Elsie Janke; Open AA Meeting, Legion, 8 p.m.
Monday August 3: Public Library 1-5, 7-9 p.m. with Summer Program.

Penny Circus Game Night at 7 p.m.; Village Board Meeting 7:30 p.m.
Tuesday, August 4: School physicals for Kindergarten, junior and senior high at 1 p.m. at school American Legion 8 p.m.
Wednesday, August 5: TOPS Marian Iversen, 6:30 p.m.

Raymond Iversen of Hacienda Heights, Calif. has been visiting in the Howard Iversen home since July 6 and will be in Winside several weeks.

Mrs. Lester Grubbs, Irene Iversen, Mrs. Howard Iversen, all of Winside and Raymond Iversen of Hacienda Heights Calif. traveled to Lincoln July 25-26 and visited in the Tom Iversen and Nancy Bottelsen homes. On Sunday afternoon they attended a bridal shower in the home of Mrs. James Mau for Mary Bowler. Marla Miller celebrated her eighth birthday July 22 by going to the Pizza Hut in Norfolk with her parents Mr. and Mrs. Myron Miller, brother Garin and sister Kristy, grandparents Mr. and Mrs. Dave Miller and Mrs. Glen Frevert all of Winside. Afterwards they returned home for cake and ice cream.

THE LUMBER CO.
Restaurant
Lounge & Package
113 So. Main - 375-1463

Mark Lambert
Entertaining Live
Friday, July 31

Mark plays a variety of songs including contemporary country, pop, rock and old favorites.

Friday Night Specials

Fish Fry	\$3.49
Trout	\$7.94
Lobster	\$14.95

We will be closed Saturday evening due to a class reunion!

Starts Thursday, July 30th

9 DAY EXTRAVAGANZA

All Items Subject To Prior Sale

It's fun, it's exciting! Throughout the store! Discount Furniture has got the bargains you've been looking for!!

Great savings on America's leading brand name furniture.
Exceptional "BUYS" on our entire inventory.
9 Big Days of Savings. "Big Savings"
Major price reductions in every department.

You'll find hundreds of low prices on everything for your home.

SHOP THURSDAY, 9 A.M. TO 9 P.M.
Check Our Used Furniture Selection

DISCOUNT FURNITURE

YOUR FURNITURE HEADQUARTERS FOR N.E. NEBRASKA
1 MILES NORTH OF WAYNE PHONE 375-1885
FREE DELIVERY

Reg. \$189.95
RECLINERS
Only \$179.95

SOFAS
Great Value!
\$299.95

ROCKERS
Only \$99.95

QUEEN SLEEPERS
Only \$299.95

GREAT SAVINGS

SOFAS SLEEPERS

DINETTES

ROCKERS

RECLINERS

ANNOUNCES A BRAND

Super Foods

513 Main Street, Wayne, Ne
 Mon.-Sat. 7 a.m.-10 p.m.,
 Sunday 9 a.m.-6 p.m.

**HUNDREDS OF
 PRICES
 REDUCED
 ON ALL WELL-
 KNOWN BRANDS!**

Super F
 and see
 Hundreds of
 Just for this
 of the Lowe
 as well as

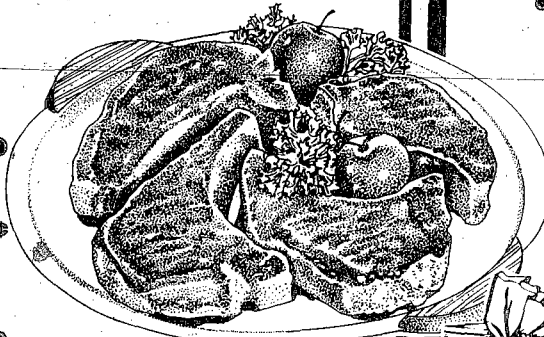
CHOICE MEATS

FAMILY PACK ASSORTED

PORK CHOPS

\$1.39 Lb.

- Family Pack Ground Chuck . . . Lb. **\$1.19**
- John Morrell Franks . . . 12-Oz. **69¢**
- Mrs. Paul's Fish Sticks . . . 12.25 Oz. **\$2.19**



LOIN CHOPS
\$1.69 Lb.

RIB CHOPS
\$1.59 Lb.

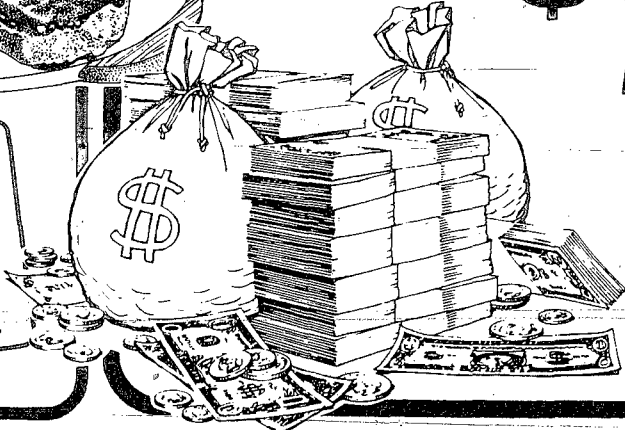
.....You'll find savings of 5¢ - 10¢ - 15¢ on Na
 on our shelves. This can add up to save our custo
 to compare for yourself, before you spend anothe

THE MARKI

Thank You!

\$260

"Complete Details
 Posted in Our
 Store"



We want to show our appreciation
 You" for shopping with us, we an
 to our new reduced price program
 weekly. Each time you're in, get a
 numbers will be posted for \$50 pr
 money not claimed will be put int
 number claiming all the unclaim

Advertised Specials . . . Pr

Super Foods

PLEASMOR STICK

MARGARINE

4/\$1.00

1-Lb. Box

Blue Bunny

HALF & HALF

37¢

1-Pint

Blue Bunny

1% Milk Gal. **\$1.69**

Super Foods

CAMPBELL'S
 CREAM OF MUSHROOM

SOUP

10.75-Oz.

33¢

Jiffy Corn
 Muffin
 Mix 8-Oz. **4/\$1.00**

Krispy
 Crackers 1-Lb. Box **69¢**

Hershey's
 Chocolate
 Syrup 16-Oz. **69¢**

Super Foods

**COKE & 7-UP
 PRODUCTS**

\$2.67

12-Pack
 12-Oz. Cans

Pleasmor
 Potato
 Chips 7.50z. **79¢**

Kraft
 Macaroni &
 Cheese
 Dinner 7 1/2-Oz. **3/\$1.00**

NEW PRICE POLICY

Saving you time and money...

... you need to drive out of town for the lower warehouse prices....
 ... our store is listening and responding to your needs. Come in today for yourself.

... items on our shelves have been reduced in price ... and not just one week — but every week you come in to shop. You'll find many of the lowest prices in town on hundreds of nationally advertised items from our own Famous Brands.

... nationally advertised food and household items can save you many dollars on their yearly food bill. We invite you to see the difference in price on food anywhere else.

MARKED DIFFERENCE



Bonus!

0000

"No Purchase Required, 18 Years or Older to Play"

... to the Wayne area community and to say "Thank you for offering this 'BONUS BUCK' Program in addition to our other services. For 13 weeks, we'll be giving away \$200 'Bonus Buck' tickets. Each Monday, lucky winners, \$25 prizes and \$10 prizes. Weekly prize drawings, a weekly jackpot drawn with one winning number. Winning numbers drawn each Sunday.

... Prizes Effective July 28 to August 3, 1987

Fresh PRODUCE

Peaches or Nectarines	Lb.	49¢
Blueberries	Pint	\$1.19
Celery	Stalk	49¢
Carrots	2-Lb. Bag	49¢

PEACHES

10-Lb. Russet
POTATOES
\$1.59
10-Lb. Bag

\$5.99

17-Lb. Lug

OUR FAMILY

TOMATO JUICE

79¢

46-Oz. Can

BREAD

24-Oz. Loaf

49¢

SELECT SANDWICH

Gerald's Old Fashioned BAR-B-Q "Smoked" Serving In The Store

Bar-B-Q Pork SPARE RIBS \$4.79 Lb.		Bar-B-Q (By the Piece) BEEF BRISKET \$3.99 Lb.
Bar-B-Q Sliced BEEF or PORK \$4.99 Lb.	Bar-B-Q Whole CHICKENS \$4.49 Ea.	Bar-B-Q Beef or Pork SANDWICHES \$1.99 Ea.
<p>Bar-B-Q BAKED BEANS \$1.39 4-Oz. Cup Pint Cup</p>		

SERVING HOURS:
 Thursday & Friday, 10 a.m.-7 p.m.;
 Saturday, 10 a.m. to 5 p.m.

SMOKED TURKEYS BY SPECIAL ORDER

Way Back When

10 years ago
July 25, 1977: The Lonnie Fork farm home one and a half miles south of Carroll suffered minor damage when it was struck by lightning. The bolt struck the edge of the roof, tore some shingles loose, burned a six-inch hole in the ceiling plaster, and loosened a door casing... The arrival of Coors Beer in Wayne is expected to make a big splash in most taverns, but the wave of converted consumers may just be a small trickle... Wayne Midgets defeated Emerson by a 22-10 score. Team members in the line-up were Jeff Zeiss, Dennis Carroll, Dean Carroll, Tom Ginn, Mark Ganseborn, Dave Schwartz, Jerry Goeden, Dan Mitchell, Jeff Dion, Loren Murray and Jeff Sperry.

20 years ago
July 31, 1947 — The highway department of Nebraska has plans all but ready for a new L-shaped building east of Wayne. It would be more than twice as big as the present highway department structure... Wayne is among the five cities that have submitted bids for having the new Northeast Nebraska Vocational-Technical School. Wakefield, Emerson, Plainview, Wayne and Norfolk are the first five towns to submit formal bids... Northwestern Bell Telephone Co. has started a long-range program which will eventually result in buried cable for all the firm's lines in Wayne... Tim Koll read 136 books in the summer reading program, allowing him to win the grand prize of a Thorndike-Barnhart beginning dictionary.

30 years ago
July 25, 1957: The drive for funds to purchase an industrial site this week topped the half-way mark as pledges and purchases of shares hit \$5,350, said Chairman Elmer Harrison... Two Wayne youths, Darrel and John Fuelberth, turned in creditable performances in the annual Junior Golf tournament at Alliance. Darrel finished 12th with a 36 hole total of 170... As hot weather made temperatures zoom in Wayne, electrical consumption has joined the mercury in its climb to new records. Light Plant Superintendent Norb Brugger said... Phone construction for the NE Nebraska Telephone Company continues to hamper Wayne Herald news coverage of the Dixon area as that community was cut to one rural line and a few scattered

phones in town this week... Morris Jenkins suffered a fracture of the bone of his right leg near the ankle when he fell while doing chores. He was chasing hogs when the mishap occurred. The member was put into a cast and he is convalescing at home... Approximately 25 head of cattle are expected at the NE Nebraska Guernsey Parish Show on Tuesday at the Wayne Gilliland farm a mile south and one and a quarter miles west of Wayne... A mid-summer clean-up of the Izaak Walton Lake will be started tonight, the president Fred Dale said.

40 years ago
July 24, 1947 — The board of equalization has raised property valuations on items to make for uniformity among counties of the state. Items differ and percentages vary in the counties. Tangible personal property on business schedules will be raised in Wayne County 40 percent. These now show a total valuation of \$461,605 and the increase is \$184,642... Wayne County Extension Office is taking orders for farm harvest workers. Farmers desiring help and persons wishing to shock or help with threshing should leave their names with county agent Walter R. Harder... Dorr Feed Mill has had the elevator on East 2nd Street repainted and repaired. The elevator near the Dorr office south of the railroad will be converted into a feed mill... Wayne-Pierce REA district is to have a new office and warehouse building, costing about \$50,000, this to be erected on the company's site at 3rd and Logan Streets as soon as materials and labor are available... Aerial spraying was tried on the W.C. Berg, Paul Koester and Arthur Malcolm farms in Dixon County last week to rid oat fields of sunflower, hemp, artichokes and giant ragweeds...



Photography: Chuck Hackenmiller

Bargain hunter

MINDIE VERPLANK of Colorado Springs and Bree Oswald of Wakefield check out the bargains at Saturday's Dog Days event in Wayne. Stores opened as early as 6 a.m. and shoppers were there to glance over the specials.

Living At
SUNNYHILL VILLA
Is Like Being On Vacation...
WAYNE, NE

900 SUNNYVIEW

- ★ Just North of Amber Inn on Providence Road
- ★ Beautiful New Apartments Now Ready For Immediate Occupancy.
- ★ Developed for Seniors Age 62 and Up and People with Disabilities.

- BEAUTIFUL SETTING
- COMMUNITY ROOM
- QUALITY APPLIANCES FURNISHED
- LAUNDRY FACILITIES ON SITE

- WALL TO WALL CARPETING
- MAINTENANCE FREE
- ENERGY EFFICIENT

Apartments Designed For Your Comfort
Contact Orval K. Brandstetter (402) 375-3050
 Professionally Managed By: Lockwood Management of Topeka, Inc. (913) 273-2773
 FmHA — An Equal Housing Opportunity

State of Nebraska - Budget Form NBH-3
 Statement of Publication
NOTICE OF BUDGET HEARING AND BUDGET SUMMARY
District 77, Wayne, County Nebraska
 Public Notice is hereby given, in compliance with the provisions of Sections 23-921 to 23-933, R.R.S. 1943, that the governing body will meet on the 4th day of August, 1987 at 8 o'clock P.M. at the schoolhouse for the purpose of hearing support, opposition, criticism, suggestions of observations of taxpayers relating to the following proposed budget and to consider amendments relative thereto. The budget detail is available at the Office of the Clerk/Secretary.

Sandy Weid Clerk/Secretary

Actual Expense:	General Fund	Fund
1. Prior Year 1984-1985	\$17,308.90	
2. Prior Year 1985-1986	\$15,270.40	
3. Current Year 1986-1987	\$18,967.87	
Requirements:		
4. Ensuing Year 1987-1988	+\$18,500.00	
5. Necessary Cash Reserve	+\$2,000.00	
6. Cash on Hand and Estimated other Revenue	-\$4,478.40	
7. Collection Fee and Delinquent Allowance	+\$848.17	
8. Total Property Tax Requirement	-\$16,869.77	

HOLLYWOOD VIDEO Wayne
 Video Menu — New Arrivals
 "Quiet Cool" "Round Midnight" "Every Time We Say Goodbye" "Solar Babies" "Woody Allstar"
 VCRs w/Remote \$225.00

GAY THEATRE Wayne

ADVENTURES IN BABYSITTING
 She thought babysitting was easy money...
 Starts Friday, July 31 Nightly 7:20
 Bargain Tuesday 7:20-9:15
 Late Shows Fri., Sat., Tues. 9:10
 Bargain Sunday Matinee 2 p.m.

Retail Discount Store Management

We are a progressively growing discounter, operating stores in MN, IA, IL, NE, MI, ND, SD, WI, KS, WY, MT and MO.

Expansion has created an immediate need for additional management trainees.

- Discount store/retail experience is preferred.
- College preferred but not required.
- Salary commensurate with qualifications.
- Complete benefit package.
- Must be willing to relocate.

Send a resume or letter detailing qualifications and salary history to:

Human Resources Department
PAMIDA
 8800 "F" Street — Omaha, NE 68127

Happy Birthday Bill

BIG 40

State of Nebraska - Budget Form NBH-3
 Statement of Publication
NOTICE OF BUDGET HEARING AND BUDGET SUMMARY
District #76, Wayne, County Nebraska
 Public Notice is hereby given, in compliance with the provisions of Sections 23-921 to 23-933, R.R.S. 1943, that the governing body will meet on the 5 day of August, 1987 at 8 o'clock P.M. at John Schellman for the purpose of hearing support, opposition, criticism, suggestions of observations of taxpayers relating to the following proposed budget and to consider amendments relative thereto. The budget detail is available at the Office of the Clerk/Secretary.

John Schellman Clerk/Secretary

Actual Expense:	General Fund	Fund
1. Prior Year 1984-1985	\$26,762.27	
2. Prior Year 1985-1986	\$38,193.37	
3. Current Year 1986-1987	\$38,865.07	
Requirements:		
4. Ensuing Year 1987-1988	+\$44,976.00	
5. Necessary Cash Reserve	+\$7,000.00	
6. Cash on Hand and Estimated other Revenue	-\$36,419.39	
7. Collection Fee and Delinquent Allowance	+\$622.26	
8. Total Property Tax Requirement	-\$16,178.89	

WISE BUYS STOCK YOUR FIRST AID KIT WHERE YOU SAV-MOR

MERCUROCHROME 1-Oz. 67¢	1-Inch x 5 Yards CURITY GAUZE 67¢	2-Inch x 5 Yards CURITY GAUZE BANDAGE 97¢
VASELINE 1-Oz. Tube \$1.27	3x3 Steri-Pad 10's BANDAGE COMPRESSES 97¢	FIRST AID CLEANSING WIPES 10's \$1.17
BAND-AID Shear or Plastic BANDAGES 30's \$1.49	TRIANGULAR BANDAGES \$1.29	1/2-Inch x 5 Yards CURITY ADHESIVE TAPE 87¢
TRIPLE ANTIBIOTIC OINTMENT \$1.47	HYDRO CORTISONE CREAM 1/2-oz. \$1.47	SCHOOL SCISSORS 57¢
SPLINTER FORCEPS 97¢	1/2-Inch x 10 Yards MICROPORE SURGICAL TAPE 87¢	

Sau-Mor Pharmacy
 1022 Main St. Wayne 375-1444

State of Nebraska - Budget Form NBH-3
 Statement of Publication
NOTICE OF BUDGET HEARING AND BUDGET SUMMARY
Dist. 5, Wayne, County Nebraska
 Public Notice is hereby given, in compliance with the provisions of Sections 23-921 to 23-933, R.R.S. 1943, that the governing body will meet on the 10 day of August, 1987 at 8 o'clock P.M. at schoolhouse for the purpose of hearing support, opposition, criticism, suggestions of observations of taxpayers relating to the following proposed budget and to consider amendments relative thereto. The budget detail is available at the Office of the Clerk/Secretary.

Jim Haase Clerk/Secretary

Actual Expense:	General Fund	Fund
1. Prior Year 1984-1985	\$15,447.35	
2. Prior Year 1985-1986	\$14,877.69	
3. Current Year 1986-1987	\$15,780.19	
Requirements:		
4. Ensuing Year 1987-1988	+\$22,910.00	
5. Necessary Cash Reserve	+\$5,000.00	
6. Cash on Hand and Estimated other Revenue	-\$11,274.12	
7. Collection Fee and Delinquent Allowance	+\$903.42	
8. Total Property Tax Requirement	-\$23,541.30	

The Golden Years
 by Gil Haase

A new study by Charles Longino of the University of Michigan's Center for Social Research in Aging found that there were 2,240,007 Americans aged 65 and over counted in the last census. The overwhelming majority of them, more than 69 percent are women and Social Security is their primary source of income.

If you're over 65 and a United States citizen, you may be entitled to free eye care. If it's been at least three years since you last saw an ophthalmologist and you think you may be suffering from a medical-related problem with your eyes, call the national Eye Care Helpline at its tollfree number, 1-800-222-3937. The Helpline is in operation on weekdays from 8 a.m. to 5 p.m. in all time zones, except in Hawaii, where it's available from 8 a.m. until 3 p.m.

Remember When? 1927 — Two major league baseball records were set that year when Walter Johnson, the great Washington Senators pitcher, ended the final season of his 20-year career after having pitched 113 shutouts and struck out 3,497 opposing batters.

Presented as a public service to our senior citizens, and the people who care about them by the Wayne Care Centre, 918 Main Street, Wayne, Nebraska 68787, 375-1922.

